



Energy Efficiency

Tip of the Month

Fall is here, and that means colder months will be here before we know it. Is your home prepared for the drafts that may enter? Tight-fitting insulating drapes or shades are a perfect way to keep the heat in and the cold out.

Source: Department of Energy

Evaluating LED Security Lighting for Members

Lake Region Electric Cooperative is conducting a study on LED security lighting. LREC is only installing LED security lights on new services requesting a security light. LREC is implementing the change of high pressure sodium to LED on new services.

"We are testing the new lights in the field and comparing them to what the manufacturer states about the product," said Logan Pleasant, LREC Engineer.

This study will compare the new technologies available to what the co-ops already use for security lights.

The security light LREC is evaluating is a 44 watt LED light made by Evluma. These lights are a downward directional light, with 100 ft. of lighting from the pole. The manufacturer has a 10 year warranty on the LED lights. These lights have a 20 year life expectancy. LED lights are the most efficient lights on the market. The use of LED security lights will end up sav-

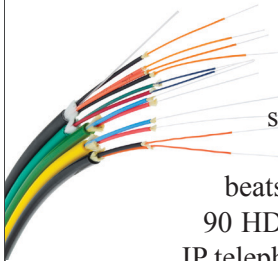


ing the co-op money and in return saving the members of the co-op.

LREC has no plans on implementing a system wide security light change out. **This is only a study.** LREC is making you, the members, aware in case you see these new LED security lights on our system.

New LED security lights will be on display at next year's Annual Meeting in April for members to view. Any question about LED security lights can be addressed by calling LREC's offices at **918-772-2526**.

Lake Region Electric Cooperative's Broadband Fiber-Optic Project is Up and Running



Lake Region Technology and Communications (LRTC), a subsidiary of Lake Region Electric Cooperative, is here to tell you about some great new services offered over our fiber optic network.

LRTC offers super-fast internet speeds up to 100 megabits per second. That beats typical cable and DSL. We also offer IP Digital TV with 254 channels and over 90 HD channels with DVR capabilities. As well as unlimited local and long distance IP telephone service.

LRTC is offering a new customer sign up special - **FREE installation and equipment with two year contract.** LRTC fiber services availability may depend on where you live. You can view a map of the service coverage area, prices, and TV channels offered on our website at **www.lrecok.net** or call us today for more details at **918-772-2526**.

Don't get lost in the shuffle

The new EPA rule threatens jobs and increases costs. Over half a million Americans have told the EPA this simply won't work. Please join us and let your voice be heard!

Six hundred pages, plus another 1,000 of supporting documents – that's the length of the latest proposal from the Environmental Protection Agency (EPA). It would amend the Clean Air Act (only 465 pages) to limit carbon dioxide (CO2) emissions from the power plants on which we rely today.

Besides the actual rule, a lot has been written about its legality, feasibility, and complexity. But lost in the shuffle of these thousands of pages is the impact on people. How much will electric bills increase? Will manufacturers relocate? How many jobs will be lost? Which power plants will be forced to shut down?

These are difficult questions. But they are important questions. At LREC, we work hard to keep your electricity affordable and reliable. That's why we are asking the EPA for answers to these and many other questions.

We don't want you to get lost in the shuffle. We put you – our members – first. We see you every month paying your bill. We work with you. We know when times are tough. We often live next door.

After all, you govern us. Our board members and community leaders are one in the same. We are as local as any organization.

That's why we keep reminding the bureaucrats in Washington, D.C., that the rules they write have an impact in the real



Can you afford to **pay more** for your electricity bill?

THE **EPA** THINKS YOU CAN.

MAKE YOUR VOICE HEARD!

ACTION.COOP

world – where we live. That's why we are encouraging everyone to take 30 seconds to sign up at www.Action.coop and tell the EPA we cannot afford these regulations.

Please raise your voice. Don't get lost in the shuffle. Together, we can tell the EPA that support for the environment and a true all-of-the-above energy policy are not mutually exclusive.

Together we will remind regulators and lawmakers that the impact new rules and laws have on people should be their first thought, not their last.

With more than 900 electric cooperatives in the country backing us up, our voice can be heard. We have a great and positive story to tell. We can tell the story together. And it will not take 1,600 pages. Please take a moment to visit www.Action.coop today.



Working Smoke Alarms Save Lives

Test Yours Every Month!

Fire Prevention Week • October 5–11, 2014



October is National Cooperative Month

Celebrate with Lake Region Electric Cooperative.

Every October, cooperatives are recognized for the qualities that make the business model unique. Seven cooperative principles set us apart from other businesses: voluntary and open membership; democratic member control; member's economic participation; autonomy and independence; education, training and information; cooperation among cooperatives; and concern for community.

This Co-op Month, we are focusing on "The Electric Co-op Connection: Discover the meaning of membership." Co-ops exist to serve their members, but they also play a major role in their local communities.

"Cooperative membership is unique," says Stanley Young, LREC Marketing Director. "Electric cooperatives are committed to providing members with safe, reliable and affordable electricity, but there is more to it than that. We are local, and that

means we care about our community. This is why we participate in programs such as Operation Round Up®, Youth Tour, safety demonstrations, etc."

LREC is proud to be part of America's cooperative network, which includes more than 47,000 cooperative businesses.

Electric co-ops provide power for many Oklahomans, with 28 electric co-ops in Oklahoma. Other co-op businesses thrive in our state, too.

In the 1930s, rural America needed electricity just as much as anyone else. It was a major challenge that big utilities were not interested in tackling. So, the men and women of rural America banded together and made it happen. And that's why we celebrate in October – we celebrate the power of working together for the common good and bettering the quality of life for our friends and neighbors.

In addition to cooperative utilities, Oklahoma residents are served 123601 cooperatively by credit unions, food co-ops, agricultural co-ops, and more!

Seven Cooperative Principles

VOLUNTARY AND OPEN MEMBERSHIP

Cooperatives are voluntary organizations open to all persons able to use their services and willing to accept the responsibilities of membership, without gender, social, racial, political or religious discrimination.

DEMOCRATIC MEMBER CONTROL

Cooperatives are democratic organizations controlled by their members, who actively participate in setting policies and making decisions. The elected representatives are accountable to the membership. In primary cooperatives, members have equal voting rights (one member, one vote) and cooperatives at other levels are organized in a democratic manner.

MEMBERS' ECONOMIC PARTICIPATION

Members contribute equitably to, and democratically control, the capital of their cooperative. At least part of that capital is usually the common property of the cooperative. Members usually receive limited compensation, if any, on capital subscribed as a condition of membership. Members allocate surpluses for any or all of the following purposes: developing the cooperative, possibly by setting up reserves, part of which at least would be indivisible; benefitting members in proportion to their transactions with the cooperative; and supporting other activities approved by the membership.

AUTONOMY AND INDEPENDENCE

Cooperatives are autonomous, self-help organizations controlled by their members. If they enter into agreements with other organizations, including governments, or raise capital from external sources, they do so on terms that ensure democratic control by their members and maintain their cooperative autonomy.

EDUCATION, TRAINING AND INFORMATION

Cooperatives provide education and training for their members, elected representatives, managers, and employees so that they can contribute effectively to the development of their cooperatives. They inform the general public, particularly young people and opinion leaders, about the nature and benefits of cooperation.

COOPERATION AMONG COOPERATIVES

Cooperatives serve their members most effectively and strengthen the cooperative movement by working together through local, national, regional and international structures.

CONCERN FOR COMMUNITY

While focusing on member needs, cooperatives work for the sustainable development of their communities through policies accepted by their members.

Stealing Electricity Costs All of Us

Electricity theft is not a victimless crime. When somebody tampers with a meter and steals electricity, it will cost you, the members of LREC. Tracking and confirming theft is also a time-intensive and expensive job for employees of the co-op.

To help deter theft and help recover some of the associated costs, LREC charges a \$300 meter tampering fee to any account where power theft has been confirmed.

If you see or suspect meter tampering to steal electricity, please report it to your local Lake Region Electric Office. Not only does it cost other members, it can also be a safety issue that puts innocent bystanders and our linemen at risk of injury or worse.



LREC's Automatic Bank-Draft Contest Winners

Lake Region Electric Cooperative's Automatic Bank-Draft can save members time and money by avoiding the use of checks, stamps, and driving expenses. During the month of August members who signed up for Automatic Bank-Draft were entered into a random drawing for four \$25 Wal-Mart gift cards. Congratulations: Timothy Hoover, Bradley Lihleton, Melanie Warren, and Raymond Lewis.

Stop Infiltration, Start Saving

Fall maintenance tips to keep your house in shape and help keep you warm this winter.

Faulty seals, cracks, penetrations, holes, and more can all contribute toward infiltration increasing our energy bills. Cable lines, telephone wires and dryer vents are just a few of the many penetrations a home can have. At each instance it is important to make the openings airtight to keep warm air from getting inside in the summer and conditioned air from escaping. View examples of common penetrations below.

Visit your local hardware store to see the appropriate indoor and outdoor caulks, foam applications, and other ways to close and seal the penetrations. Detailed project sheets can be found and downloaded www.TogetherWeSave.com. Don't forget you can always contact Lake Region Electric Cooperative for additional resource and energy efficiency support.



Weather stripping is sold by the linear foot. Measure around the door or window to be weather stripped to determine the total length needed. It is also advisable to measure the width and depth of the gap. Some types of weather stripping come in different widths and thickness.

Board of Trustees

Gary CooperPres.
Bobby MayfieldVice Pres.
Jim LoftinSecr.-Treas.
Jack TeagueAsst Secr.-Treas.
Randall Shankle Member
Lynn Lamons Member
Scott Manes Member

Staff

Hamid VahdatipourCEO
Ben McCollumDir. of Finance
Martin WallsDir. of Operations
Stanley YoungDir. of Marketing
Larry MattesEditor
Tina Glory-JordanAttorney

Office Hours

Monday-Friday
8:00 a.m. - 4:30 p.m.

Telephone

800-364-LREC or
918-772-2526

Website:

www.lrecok.coop

Locations

Hulbert, Wagoner &
Tahlequah, OK.

Main Office Address

P.O. Box 127
Hulbert, OK 74441

Hidden Account Number

Look for your account number hidden in this issue of the *Powerline Press*. If you find your number, Lake Region Electric will credit your next bill.

To claim your credit, notify LREC's Hulbert office by phone or mail during the month of publication.

The amount increases by \$10 with each issue your prize goes unclaimed to a maximum of \$50.

For more information, call 800-364-LREC or 918-772-2526

Cooperative bylaws are available upon request at Lake Region Electric Cooperative's office in Hulbert.