



Energy Efficiency
Tip of the Month

When you are asleep or out of the house, turn your thermostat back 10° to 15° for eight hours and save around 10 percent a year on your heating and cooling bills. A programmable thermostat can make it easy to set back your temperature – set it and forget it!

Source: U.S Department of Energy



Connecting a Solar or Wind System?



Photos by: Jerry Laty

LREC wants to assist cooperative members interested in owning and installing a renewable generation system. If you are a member of Lake Region Electric Cooperative and are interested in interconnected solar or wind generation, please call us in **advance** at 918-772-2526 or send an e-mail to solarinfo@lrecok.coop for complete information.

There are rules concerning proper equipment, safety, liability, and metering. Please contact us before you start your project to be sure your plans comply and your project goes smoothly. Before the review of the application and Distributed Generation plan by the cooperative and its power supplier, the member shall pay an application fee based on the size of the system.

Members can review LREC's guidelines online at <https://www.lrecok.coop/connecting-solar-or-wind>. This will help you navigate the interconnection process.

Please be sure to call LREC and discuss your project with our staff for general information or specific needs. We applaud our members who are working to conserve energy and who support renewable energy. Contact us to learn more about how your local cooperative can help.

Robert Johnson, LREC Meter Tech



Steve Hammer, LREC Meter Tech

Electric Rate Increase Discussion from LREC's Power Provider

Associated Electric Cooperative (AECI) located in Springfield, Missouri generates and supplies the electricity for LREC and fifty-one other cooperatives in Oklahoma, Missouri, and Iowa. All the electricity provided to our members is purchased from AECI.

In the second level of the system are the regional cooperatives that transmit power from AECI to the distribution cooperatives. These organizations are known as generation and transmission cooperatives (G&Ts), and they serve six geographical areas of Missouri, southern Iowa and northeast Oklahoma. KAMO Power in Vinita, Oklahoma is the G&T for Lake Region Electric Cooperative.

A rate change in any part of the three-tier system (how our members receive electricity) can affect the end users rate. KAMO has announced plans to implement a 5.5% rate increase effective January 1, 2018. Much of the rate increase KAMO is considering has to do with the transmission costs embedded in the cooperatives power supply bill. KAMO has invested over a half billion dollars in new transmission and transmission improvements the previous 15 years. KAMO also utilizes other utility companies' transmission systems to deliver our electricity – those costs have escalated substantially as well.

Also, in 2017, KAMO incurred a 2% rate increase from our wholesale energy supplier, Associated Electric Cooperative (AECI), which was not passed on immediately. KAMO chose not to pass the rate increase to its members (LREC) in 2017 due to the uncertainty of the future grid costs. AECI has been providing transmission service to Noranda, an aluminum factory, which is not in operation any longer. The excess capacity of our power plants has been sold to other entities or utilities to generate additional revenue. This wholesale rate increase stems from the loss of Noranda transmission revenue (\$9 million) and a decrease in non-member energy sales.

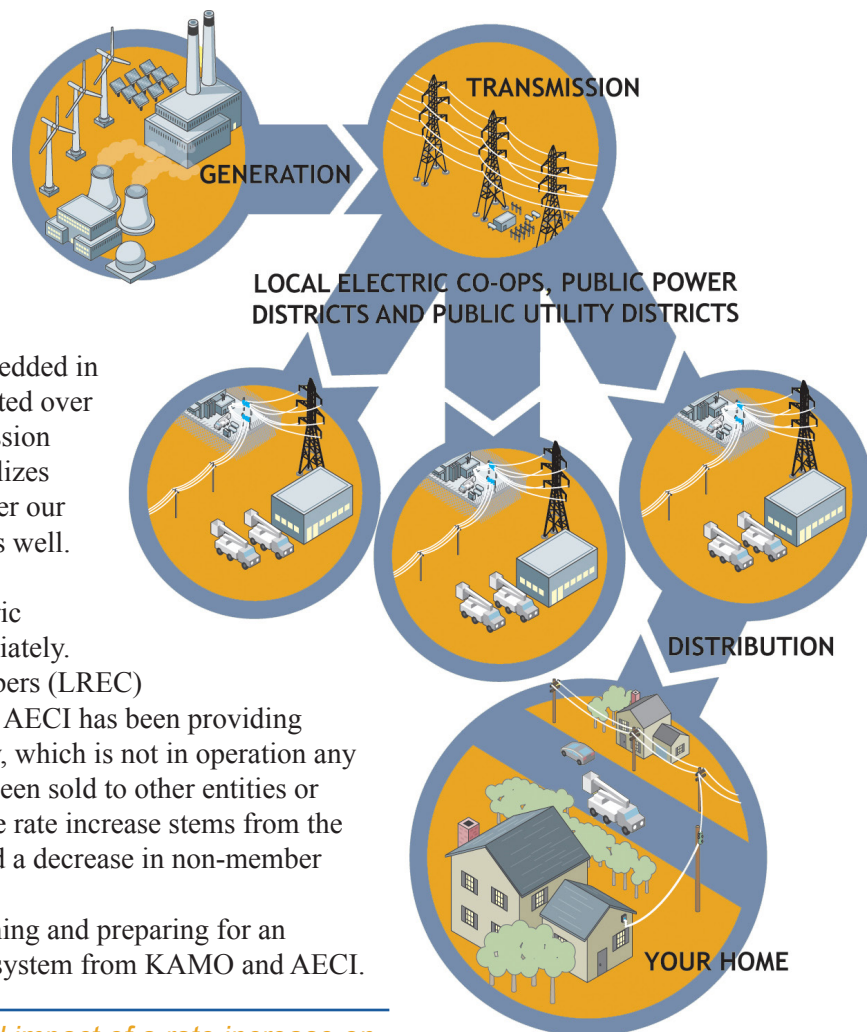
LREC management and board of trustees are planning and preparing for an expected increase in cost coming down the three-tier system from KAMO and AECI.

"We're always very understanding of the financial impact of a rate increase on our members, and we don't have them unless we don't have any other choice," said Hamid Vahdatipour, CEO.

Lake Region always strives to provide quality service at the most affordable rates possible. Please read your monthly member newsletter or visit our website for more details regarding any LREC electric rate announcements.



Thomas Hill Energy Center, AECI Power Plant



Fiber Optic Lake Crossing near Ranger Creek is Complete!



Photo By: Moondance Photography Drone

To bring Lake Region fiber optic services to our members, we have launched a major construction project to suspend and bury miles of brand new fiber optic cable in rural parts of Cherokee, Muskogee, and Wagoner counties. Please remember we are building a fiber-to-the-home (FTTH) network from the ground up. Construction will take time, but understand, we are building a FTTH network that will last years into the future. We appreciate the patience of all our early backers in this project.

Zone 5 – Perk | This zone was the fastest zone to reach the goal needed of backers to provide service with our Crowdfiber Campaign. Thank you to all the early backers for launching this zone into service first. Zone 5 – Perk was completed in March 2017. Once the construction is completed in a zone, the contractor crews will move to the next zone. Any new service requested after crews have left a zone could take 8 - 10 weeks to connect. We understand this can be discouraging and we appreciate your patience on your fiber connection. We encourage members to sign up before or while construction crews are working in a zone. We would like for you to consider the service is worth the wait.

Zone 1 - Ft Gibson | Crews have just completed a 1550 foot span over the Ft Gibson Lake near Ranger Creek. Fiber crews are now working on building the line on the north side of Ranger Creek (Rocky Haven Dr, Basore Cove Rd, Pistol Point Rd, Banana Cove and north along Highway 80).

Zone 2 - Hulbert | Crews are working on finishing the remaining drop request in this area, roughly 170 more houses need to be connected. We have connected 200 homes in this zone. We are also evaluating the feasibility of extending Zone 2 - Hulbert further north to reach more members. Be sure you are signed up and registered if you live north of Lost City toward Peggs. These pre-registration “backers” guide our construction plans.

Zone 12 - Sparrow Hawk | Mainline construction is finishing up, and we have released the drop request. The members should start seeing crews running service lines overhead and underground to all the addresses registered in this zone. Splicing and testing will also be underway while drop crews are working in the area. Once construction is complete in this zone, new service requests could take 8 - 10 weeks similar to other completed zones.

Zone 11 - County Line | Mainline construction has started in this zone! We are sorry for all the delays and unforeseen issues we had regarding this zone starting construction. This zone was placed on hold for several months. Zone 11 – County Line is a high priority to complete based on all the backers who have pre-registered so long ago. We understand the frustration and are working to connect all the backers in this zone to our fiber network as fast as we can.

► Fiber Update Continued on Page 4

Lake Region Annual Blood Drive a Success

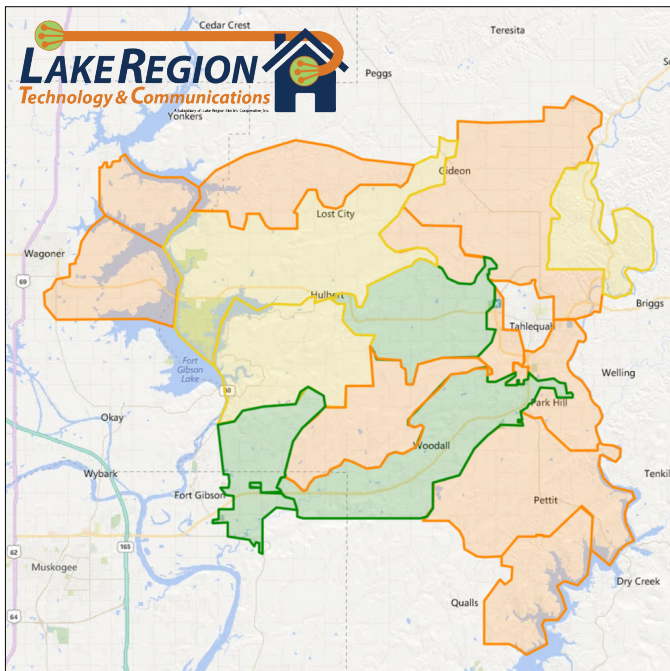
Nineteen volunteers from Lake Region and the Hulbert Community helped save lives by donating blood at Lake Region's annual blood drive held at the Hulbert office.

Donors enjoyed snacks and drinks while donating blood inside of Oklahoma Blood Institute (OBI) bloodmobile. Each donor received a free t-shirt, two admission vouchers to the Safari Joe's Water Park in Tulsa and were entered in a grand prize giveaway for Tulsa Drillers Tickets. 898001

On average, close to 1,000 donors are needed, statewide, each day to meet all the needs of patients in the 150 hospitals serviced by OBI in Oklahoma. In our area, 100% of the hospitals receive blood from OBI and its donors.



Jon Enkey, LREC Line Superintendent



Fiber Update Continued

Zone 3 - Keys | We have mainline construction proceeding in this area, Highway 82, Houseshoe Bend Rd, Indian Rd, and Stone Chapel Rd. Mainline construction moves a lot faster than drops and splicing. This zone is next in line in order of zones with the most backers signed up on our Crowdfiber website. Meanwhile, if any other zone passes Zone 3 - Keys in the number of backers, they could be built sooner.

The remaining zones are up in the air if we will build them based on the current backers pre-registered. Be sure to help bring Lake Region FTTH services to your area and launch your zone into construction, next, by pre-registering online at register.lrecok.net or calling 918-772-2526. LRTC will waive the \$250.00 installation fee for the early online backers. More than 1,500 members are already surfing the web at high-speeds, and your area could be next! Get your neighbors and friends on board.

Board of Trustees

Bobby MayfieldPresident
Scott Manes.....Vice-President
Lynn LamonsSecretary -Treasurer
Randall Shankle.....Asst. Secretary-Treasurer
Gary Cooper Trustee
James Walls Trustee
Jack TeagueTrustee

Staff

Hamid VahdatipourCEO
Ben McCollumDirector of Finance
Logan Pleasant.....Director of Operations
Stanley YoungDirector of Marketing
Larry MattesEditor
Tina Glory-JordanAttorney

Office Hours

Monday-Friday
8:00 a.m. - 4:30 p.m.

Telephone

800-364-LREC or
918-772-2526

Website:

www.lrecok.coop

Locations

Hulbert, Wagoner &
Tahlequah, OK.

Main Office Address

P.O. Box 127
Hulbert, OK 74441

Hidden Account Number

Look for your account number hidden in this issue of the *Powerline Press*. If you find your number, Lake Region Electric will credit your next bill.

To claim your credit, notify LREC's Hulbert office by phone or mail during the month of publication.

The amount increases by \$10 with each issue your prize goes unclaimed to a maximum of \$50.

For more information, call 800-364-LREC or 918-772-2526

Cooperative bylaws are available upon request at Lake Region Electric Cooperative's office in Hulbert.