



Energy Efficiency
Tip of the Month

Is your room air conditioner working overtime? Reduce air leaks by installing rigid foam panels (instead of the commonly used accordion panels) in between the window frame and unit, and secure with duct tape.

Source: energy.gov

Get the Smart Hub App today!



Use Caution Near Co-op Equipment

As you find yourself spending more time outdoors this summer, Lake Region Electric Cooperative reminds you to exercise caution near electrical equipment maintained by the co-op.

Substations and power lines carry extremely high voltages, and if contact is accidentally made, the results can be dangerous—or even deadly.

Never climb trees near power lines. If you make contact with a tree that is touching a power line, your body could become the path of electricity from the line to the ground. If you encounter an animal trapped in a tree near power lines or inside a substation, do not attempt to remove it.

These days, we are seeing more remote-controlled

toys, like drones and airplanes, which can be a great way to have fun outdoors. But these gadgets also bring new safety concerns.

Remote-controlled toys should never be flown near power lines, substations or other electrical equipment.



LREC Offices will close Monday, July 4th in observance of Independence Day.

Remember these safety tips when flying a remote-controlled toy:

- Keep a safe distance from electrical equipment when you fly. If contact is accidentally made with a power line or a transformer inside a substation, many members of your community could be left without electricity.
- Keep the remote-controlled toy in sight at all times.
- Avoid flying if weather conditions are unfavorable. High winds could cause you to lose control of the remote-controlled toy.



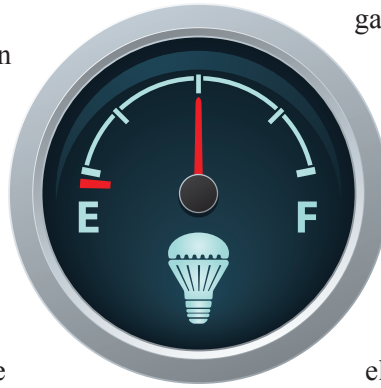
“Smart Hub” Makes it Easy to Access Your LREC Account on the Go!

Free Mobile Device App Available for iPhones, iPads, iPods, and Android Devices.

- ✓ Check Your Usage
- ✓ Pay Bill
- ✓ Report Outage
- ✓ Manage Payments
- ✓ Safe & Secure

You have the power with prepaid metering

Prepaid metering is as simple as it sounds: members pay for electricity before it is used, then use the electricity until the credit expires. A terrific analogy for prepaid metering is putting gas in your car. Say you only have \$30 for the week to pay for gasoline. You drive down to the station, pump in \$30 and drive off. As you drive during the week, what happens? You monitor the gauge and make sure each trip is necessary. If you drive too much, you burn up your \$30 before the week is out. By checking the



gauge throughout the week, you became more prudent with your gas use and made informed decisions.

Now let's transfer that analogy to your account with LREC. With normal metering, you get a bill after you have used the electricity. Sometimes it comes as a shock. "How could I possibly have used so much electricity?" Prepaid metering is designed to ease and, hopefully, eliminate that shock.

The components of a prepaid metering system aren't too different from regular metering. Two extra pieces are required; a way to turn off the power when all your money is used and a way for LREC to tell you how much you have left in your account.

Now let's see it in action. You have the prepaid metering equipment installed. Prepaid users often receive electricity use notifications through a phone call, emails or text messages.

Now you decide how often you want to buy electricity. Monthly? Weekly? Then you budget for a certain amount of power and pay the co-op.

Prepaid metering teaches the value of electricity, what uses watts in your home, provides absolute control over how much you pay and helps you reduce your energy use. It is a tremendous way to power your life. Contact LREC to learn more about prepaid metering.

By paying for electricity as you go, you can monitor energy use and know when you need to conserve. A few benefits of participating in prepaid metering are:

- Teaches the value of electricity
- Helps consumers understand what uses watts in their home
- Provides absolute control over how much money is spent on electricity
- Helps reduce energy use



Your electric cooperative employs hard-working and dedicated staff who work together for the benefit of you, our member. Thank you for proving that "hard work pays off" by providing your feedback in the 2016 American Customer Satisfaction Index survey. Your opinion has landed us at the top of the utility industry average scores and above several other service industry average scores.

82



516 Lake Region Rd. • Hulbert, OK 74441
(918) 772-2526 • lrecok.coop



Subscription
TV
service
63

Cell
phone
service
70

Airlines
71

Hospitals
74

Investor-
owned
utilities
74

Banks
76

**The numbers above represent American Customer Satisfaction Index (ACSI) results for the noted industry in 2015.*

Journeyman Lineman Certification



Photos courtesy of OAEC

Mike Hagy, Chairman of Certification Committee, congratulates (left to right) LREC linemen, Dan Hakes, Herman Miller and Kyle Moore.

LREC employees were recognized during the Oklahoma Association of Electric Cooperatives (OAEC) Annual Meeting for earning Journeyman Lineman certifications. Dan Hakes, Herman Miller and Kyle Moore have completed the OAEC Journeyman Lineman training program.

The individuals must complete four years of classroom training and book work plus a set number of hours of technical on-the-job training to receive the Journeyman Lineman

certification. The program provides instructions on all aspects of working in the co-op's operations department. The program meets both national and state certification requirements.

LREC would like to congratulate both these individuals on completing the Journeyman Lineman training. 372700

Power Up at Youth Power Energy Camp



Photo courtesy of OAEC

Left to right: Jake Latty, and Brayden Gerbitz

Eighty students took advantage of this year's "Youth Power Energy Camp" in Hinton, Oklahoma. The camp is designed to help students develop leadership skills and learn about the rural electric cooperative industry. Campers engaged in safety demonstrations, climbed poles, and watched a co-op crew in action. Students had the opportunity to work with new friends from across the state to form and run their own cooperative business.

"I had a great time at energy camp. I learned more about co-ops," said Brayden Gerbitz of Tahlequah. "I enjoyed the bucket truck ride and the high voltage demonstration."

Lake Region Electric Cooperative (LREC) joined Oklahoma Association of Electric Cooperatives (OAEC) in sponsoring these two students to attend the Youth Power Energy Camp. The two students who attended are: Jake Latty of Qualls and Brayden Gerbitz of Tahlequah.

The Youth Power Energy Camp is coordinated by OAEC. If you would like more information about Youth Power Energy Camp please contact Glen Clark at 918-772-2526.

High-Speed Internet from your Co-op

Photo courtesy Pulse Broadband



A Subsidiary of Lake Region Electric Cooperative, Inc.

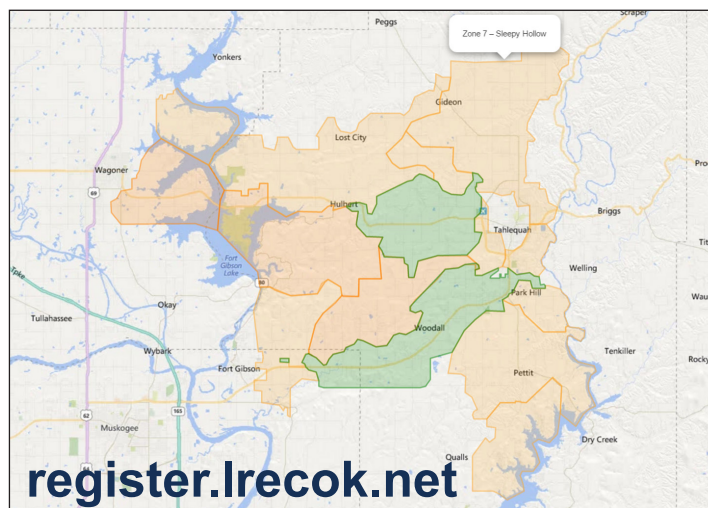
Backers (sign ups) have been steadily increasing on the Crowdfiber website over the last few months. However, we still need more backers to sign up and help make this Fiber-to-the-Home expansion project a success. As you can see on the website we now have around 559 backers in the designated expansion zones. We also have around 280 backers outside of the expansion zones who are interested in our Fiber-to-the-Home. This is also a good sign. We will keep monitoring the backer's locations and we hope to

build fiber lines to the areas of the most interest.

No matter where you live, the goal is to get at least 45% of the members in your zone to Join the Crowd. It is possible that a zone is eliminated from Phase 1 due to lack of interest and another zone added to phase 1 because the interest is higher in another area.

Some members may have noticed we have engineer consultants in town mapping Zone 1, 5 and 11. These contractors are observing our system and measuring what it will take to build fiber to each home in these zones. If you see these contractors on your property they are conducting work for LREC. They will be collecting GPS coordinates of each one of our poles. Their crews may be using an ATV or a motorcycle and should be clearly identified as LREC contractors.

Keep up the great work and help spread the word. Help us get more members to Join the Crowd, so we can bring broadband fiber to your neighborhood.



Board of Trustees

Bobby MayfieldPresident
 Scott Manes.....Vice-President
 Lynn LamonsSecretary -Treasure
 Randall Shankle..Asst. Secretary-Treasure
 Gary Cooper Trustee
 James Walls Trustee
 Jack TeagueTrustee

Staff

Hamid VahdatipourCEO
 Ben McCollumDirector of Finance
 Logan Pleasant.....Director of Engineering
 and Operations
 Stanley YoungDirector of Marketing
 Larry MattesEditor

Office Hours

Monday-Friday
 8:00 a.m. - 4:30 p.m.

Telephone

800-364-LREC or
 918-772-2526

Website:

www.lrecok.coop

Locations

Hulbert, Wagoner &
 Tahlequah, OK.

Main Office Address

P.O. Box 127
 Hulbert, OK 74441

Hidden Account Number

Look for your account number hidden in this issue of the *Powerline Press*. If you find your number, Lake Region Electric will credit your next bill.

To claim your credit, notify LREC's Hulbert office by phone or mail during the month of publication.

The amount increases by \$10 with each issue your prize goes unclaimed to a maximum of \$50.

For more information, call 800-364-LREC or 918-772-2526

Cooperative bylaws are available upon request at Lake Region Electric Cooperative's office in Hulbert.