

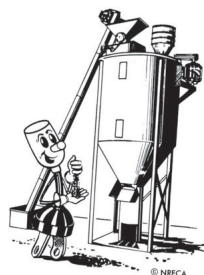


Energy Efficiency  
*Tip of the Month*

Like homes and other businesses, farms of all types can lower their electricity bills by turning off or reducing use of lights and small equipment in barns. Timers and sensors can help, too. Regular cleaning, maintenance, and seasonal tune-ups help keep larger equipment running at top efficiency.

Source: E Source

**Office Closed**  
LREC will be closed  
Sept. 2nd  
in observance of  
Labor Day.



## Cost of Consumer Goods Climb

Popular demand and short supply drives the cost of everyday necessities higher. The cost to fill your car's gas tank has changed and is obvious to anyone driving. Other increases at the grocery store are more subtle but still impact your family's bottom line. Compare the average price increase of a few household expenses to see how the rising cost of electricity stacks up.

The cost for a gallon of unleaded gasoline shot up 11.1 percent on average every year between 2002 and 2012, according to the U.S. Bureau of Labor Statistics.

The cost for a dozen eggs increased 7.8 percent. Bakers watched the price of flour rise 5.7 percent, and apples felt the crunch with a jump of 4.8 percent—every year.

### ***“Electricity Remains a Good Value”***

The cost of electricity grew at a slower pace— 3.2 percent a year, on average. The U.S. Energy Information Administration (EIA) reports homeowners across the nation pay an average of 11.7 cents per kWh. In Oklahoma, electric cooperatives keep costs even more affordable—the average price for power is 9.5 cents per kWh. Lake Region Electric Cooperative (LREC) is below average at 8.5 cents per kWh. Unlike eggs or apples, electricity is a 24-hour-a-day commodity. Despite energy efficiency advancements, the average household uses more electronic gadgets and needs more power to operate them every year.

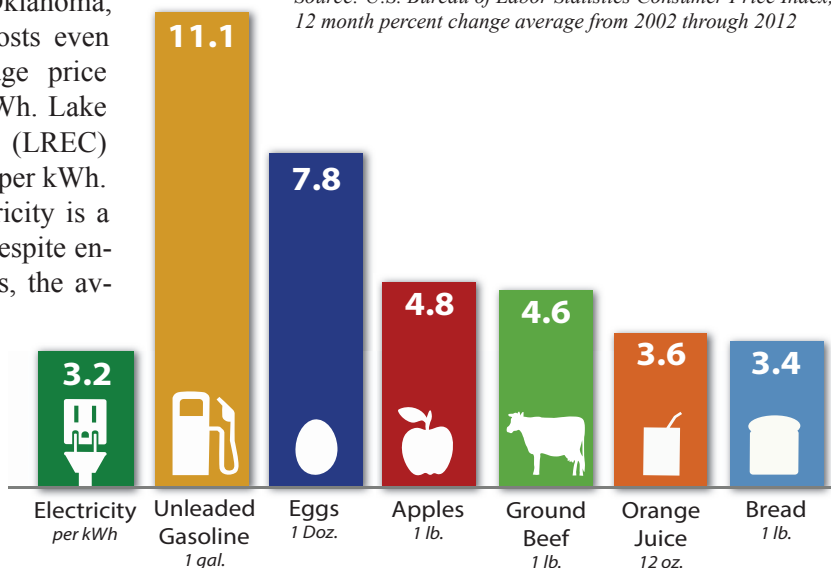
In the past 30 years, the amount of residential elec-

tricity used by appliances and electronics has increased. More homes than ever have major appliances and central air-conditioning. Digital video recorders (DVRs), computers, and multiple televisions are common.

LREC works hard to keep your electricity safe, reliable, and affordable. But you play a role in the price of your power. Just as you might cut back on eggs if your budget is tight, we can work with you to cut your monthly electric bill. See how little changes add up at [www.TogetherWeSave.com](http://www.TogetherWeSave.com). Contact us if you have questions about ways to save electricity.

**The cost of powering your home rises at a slower pace than expenses like gas and groceries. Compare the average price increase of these expenses each year over the span of a decade, and the value of electricity shines.**

Source: U.S. Bureau of Labor Statistics Consumer Price Index, 12 month percent change average from 2002 through 2012



—Thanks for the—  
**HIGH**  
—MARKS.—



Your electric cooperative employs hard-working and dedicated staff who work together for the benefit of you, our member. Thank you for proving that “hard work pays off” by giving us your feedback in our first quarter 2013 American Customer Satisfaction Index survey. Your opinion has landed us at the top of the utility industry average scores and above several other service industry average scores.

**85**



516 Lake Region Rd. • Hulbert, OK 74441  
(918) 772-2526 • [lrecok.coop](http://lrecok.coop)



*\*The numbers above represent American Customer Satisfaction Index (ACSI) results for the noted industry in 2012.*

## **REMINDER** **LREC cannot locate members’ underground wires past the meter**

Lake Region Electric Cooperative (LREC) often receives requests to locate members’ underground wires. Any wires beyond the meter (or meter pedestal) are the home owners responsibility. Due to safety and the liability risks, LREC is not able to locate members’ personal underground wires. These wires are installed by the home owner or an electrician. Please contact your electrician to locate your wires. It is still important to call the Okie Hotline (**dial 811**) for locates when digging, just be aware that LREC will only locate its own wires to the meter.

If you have any questions or concerns please contact our office at 918-772-2526.

## **Capital Credits represent your ownership in the Co-op**

The Patronage Capital Credit Allocation Notice is issued in accordance with the Bylaws of Lake Region Electric Cooperative. The total amount allocated for the calendar year of 2012 was \$2,869,076. The allocation factor is 8.155567%. To determine your amount of capital credit allocation, total the amount of your electric bills for 2012 and multiply by the allocation factor. An average member with a \$100 bill each month or \$1,200 for the year, this calculates to \$97.86. The amount of your allocation is available from the cooperative upon request.

Refund of this amount in full or in part at any time in the future shall be based on the decision of the Board of Trustees that the financial condition of the cooperative shall not be impaired by making such refund. This notice is for your information only. If you cease to be a member, please keep us advised of your current address.

Copies of the Cooperative’s Bylaws 1750900 are available upon request or online at [www.lrecok.coop](http://www.lrecok.coop).





## Myths Put To The Test

Interested in saving energy to lower your bills or reduce your environmental footprint, but confused about the new technology and information available to help you do so? We separate fact from fiction for the following energy-saving myths to help clear up typical misconceptions.

**Myth #1: It takes less energy to have my thermostat maintain a comfortable temperature while I'm away than it does to have it heat up or cool down my house when I get home.**

If you're going to be gone for more than a few hours, then it is more cost-effective to turn on the heat or the air-conditioning once you get back than it is to maintain a comfortable temperature while you're out. Adjust your

thermostat up in the summer and down in the winter by 8° Fahrenheit while you're asleep or away from the house.

**Myth #2: I can save money simply by installing a programmable thermostat.**

On their own, programmable thermostats do not make your heating or cooling system more efficient. Their money-saving value lies in their ability to, once properly programmed, automatically regulate the temperature inside your house to coincide with when you're there and when you're not. If you need help programming your thermostat, directions are usually available from the manufacturer's website.

**Myth #3: When I turn off electronics (TV, game console, or computer) they stop drawing power from the outlet.**

Even when turned off, most modern electronics consume a small amount of electricity if they're still plugged in. Chargers for mobile devices also consume electricity if plugged in, even when they are not actively charging the device. This wasted energy, called a "phantom power," is estimated to account for as much as 10 percent of a home's total energy use, according to the Lawrence Berkeley National Laboratory. The solution is to unplug your electronics when you've finished using them. Using a power strip can help you conveniently unplug multiple devices at once, and newer, "smart" power strips can automatically cut off phantom loads on their own.

*Source: Touchstone Energy, [www.TogetherWeSave.com](http://www.TogetherWeSave.com)*



### WE ARE ALL WORKING TOWARDS THE SAME GOAL.

Using energy wisely is the job of every electric co-op member. And when we work together, our combined strength is more than enough to accomplish anything. Learn more about the power of your co-op membership at [TogetherWeSave.com](http://TogetherWeSave.com)





# Bill Payment Options

*There's more than one way to pay your electric bill*

Lake Region Electric Cooperative (LREC) provides several convenient bill payment options and payment plans. For more details on any of our payment options, please contact your LREC billing representative at **918-772-2526** or visit **[www.lrecok.coop](http://www.lrecok.coop)**.

**Pay Online at [www.lrecok.coop](http://www.lrecok.coop).** Using our secure payment site you can also view your account history, check your account balance, energy usage and more.

**Prepaid.** Prepaid metering offers the opportunity to pay when you want, in the amounts you want, instead of receiving a traditional paper bill. Prepaid customers never pay a late charge and are not charged costly disconnect and reconnect fees if the account runs out of credit.

**SmartHub.** Pay using your smartphone, as well as view account history, check your balance, and contact the co-op.

**Budget Billing.** With this option your energy usage is averaged over 12 months, helping you avoid seasonal high bills.

**Automatic Bank Draft.** Monthly bill payments are automatically withdrawn from your checking, savings, or credit card account.

**After Hours Drop Box.** Leave payment in drop box at one of our office locations in Tahlequah, Hulbert, and Wagoner.

## Operation Round-Up Update

Through the Operation Round-Up program, members voluntarily "round-up" their electric bills to the nearest dollar each month. Each participant donates an average of \$6 a year, all of which goes directly toward meeting local needs.



Lake Region Electric Cooperative members who participate in the Operation Round-Up program help make these grants possible.

The Operation Round-Up Foundation met during their regular business meeting, held on July 24, 2013, and approved five grants. During the meeting, grants were awarded to:

- Wagoner Education Foundation was awarded a grant for various academic projects.
- Helping Hands for the Elderly and Handicapped Society was awarded a grant to help assist with the purchase of 10 air-conditioners.
- Wagoner Literacy Group was awarded a grant to help assist with GED services.
- Two individuals were each awarded grants to help with medical expenses.
- Project O-Si-Yo was awarded a grant for new appliances for the men's shelter.
- Cherokee County Christian Ministerial Alliance was awarded a grant for 500 back packs.
- Locust Grove School Life Skills Cooking Class was awarded a grant for a gas stove.
- Norwood School Special Education Class was awarded a grant for new computers.
- Prevent Blindness Oklahoma was awarded a grant for various items for vision screenings.
- Help-in-Crisis was awarded a grant for new office computers.
- Hulbert Public School Band was awarded a grant to assist with the purchase of band instruments.

If you would like more information about our Operation Round-Up program, please call us at 918-772-2526 or toll-free at 800-364-LREC (5732).

### Board of Trustees

Gary Cooper .....Pres.  
Bobby Mayfield .....Vice Pres.  
Jim Loftin .....Secr.-Treas.  
Jack Teague .....Asst Secr.-Treas.  
Randall Shankle .....Member  
Lynn Lamons .....Member  
Scott Manes .....Member

### Staff

Hamid Vahdatipour .....CEO  
Ben McCollum .....Dir. of Finance  
Martin Walls .....Dir. of Operations  
Stanley Young .....Dir. of Marketing  
Larry Mattes .....Editor  
Tina Glory-Jordan .....Attorney

### Office Hours

Monday-Friday  
8:00 a.m. - 4:30 p.m.

### Telephone

800-364-LREC or  
918-772-2526

### Website:

[www.lrecok.coop](http://www.lrecok.coop)

### Locations

Hulbert, Wagoner &  
Tahlequah, OK.

### Main Office Address

P.O. Box 127  
Hulbert, OK 74441

### Hidden Account Number

Look for your account number hidden in this issue of the *Powerline Press*. If you find your number, Lake Region Electric will credit your next bill.

To claim your credit, notify LREC's Hulbert office by phone or mail during the month of publication.

The amount increases by \$10 with each issue your prize goes unclaimed to a maximum of \$50.

For more information, call **800-364-LREC** or **918-772-2526**

**Cooperative bylaws** are available upon request at Lake Region Electric Cooperative's office in Hulbert.