



### Energy Efficiency Tip of the Month

During summer months, our homes can be extremely hot, making living conditions uncomfortable.

Before you fire up your air conditioner, try cooling off with a ceiling fan first. Using ceiling fans can actually raise your thermostat setting by 4 degrees and still feel just as comfortable.

Source: Department of Energy



Photo Courtesy of OAE

## ELECTRIC COOPERATIVE YOUTH TOUR 2014

We're investing today in the leaders of tomorrow



Left to right: Paige Taylor, Hallie Barnes, and Bethany Shultz

## LOCAL STUDENTS RETURN FROM YOUTH TOUR TRIP

Three local students were among more than 1,500 high school students visiting Washington, D.C. in June for the 2014 Washington Youth Tour. This trip was sponsored by Lake Region Electric Cooperative (LREC) along with hundreds of other electric cooperatives across Oklahoma and the country. Bethany Shultz of Hulbert, daughter of David and Julie Shultz; Hallie Barnes of Porter, daughter of Kent and Diana Barnes; and Paige Taylor of Hulbert, daughter of Bennie and Shelly Taylor, joined 72 other Oklahoma students for this great educational event.

"LREC is proud to offer these extraordinary students the opportunity to visit Washington,

D.C.," said Glen Clark, LREC Youth Tour Coordinator.

"The Youth Tour provides a great way for our future leaders to learn about government and electric cooperatives. By investing in these students, we believe we are investing in the future of our communities," added Clark.

LREC has sponsored the Washington Youth Tour for more than 40 years. The trip is designed to educate students about our Nation's Capital, the sacrifices made for our freedom and the value of the cooperative way of business. The students return home with a greater appreciation of our nation's leaders, a respect for the beauty of Washington, D.C., and friendships that will last a lifetime.

"The most exciting part of the trip was the new friendships I gained, listening to our congressmen speak, and looking through all the interesting books in the Library of Congress," said Barnes.

Applications for the 2015 Youth Tour will be available in January 2015, at the LREC office, or by calling (918) 772-2526.



Bethany Shultz was chosen while on this year's Youth Tour as Oklahoma's National Youth Leadership Council member. She will return to Washington in July, along with 43 other state representatives. You can read more about YLC on page 2.



# LREC-Sponsored Hulbert Student Selected for National Youth Leadership

## National Youth Leadership Council



(YLC) is composed of one student from each of the states that participate in the Youth Tour. The Oklahoma winner was Bethany Shultz of Lake Region Electric Cooperative. Shultz will be the Oklahoma state representative.

The purpose of the YLC conference is to build leadership and public speaking skills, and to enhance the delegates' knowledge of the energy industry and the cooperative form of business. These students will also make presentations at their statewide and local cooperative annual meetings.

Each student will prepare a 5-7 minute speech about what inspired them during their Youth Tour trip. You can view the YouthTour YouTube channel for examples of prior speeches. Also, the YLC National Spokesperson will be selected to address the membership at the NRECA Annual Meeting and to address the Youth Tour delegates the following year.

Members of the YLC play an important role during NRECA's Annual Meeting the following spring. Not only are the YLC members recognized on stage, they have a hands-on experience with virtually every facet of the meeting including the resolutions process and helping our members communicate with their legislators.

Youth Leadership Council members leave more poised, confident and a better developed leader with a strong determination to improve your community and make their country a better place. Further, they leave having built life-long friendships with other student leaders from across the country.



# Let The Bank Pay Your Electric Bill

## *Automatic Bank-Draft for Members*



help members who receive their paycheck or income at different times of the month. Automatic draft dates are the 1st, 5th, 12th, or 19th of each month. Members will have the option of setting the date they want their monthly bill drafted. If a member is already participating in the Automatic Bank-Draft program, you can ask to be switched to your preferred draft date.

Automatic Bank-Draft can be set-up by visiting one of our offices or calling our office to request a form. Members can also apply online at [www.lrecok.coop](http://www.lrecok.coop). Mem-

bers will need to continue paying their electric bill as normal until "**BANK DRAFT**" is printed on the bill.

**Members who sign up in the month of August for the Automatic Bank-Draft program will be put into a prize drawing for one of four \$25.00 Wal-Mart gift cards.**

**Electronic payment options like Automatic Bank-Draft can save members time and money by avoiding the use of checks, stamps, and driving expenses.**

LREC continues to offer its members beneficial and convenient services related to receiving and paying their monthly bills. We offer Automatic Bank-Draft four times a month for members to have their electric bill drafted. Automatic Bank-Draft payments are transferred directly from your checking or savings account to LREC. We hope these draft dates

If you have any questions about the Automatic Bank-Draft program, please contact our offices at 918-772-2526 or toll-free at 800-364-5732. You can also visit our website for more information at [www.lrecok.coop](http://www.lrecok.coop).





# Beyond the flip of a switch

## *Understanding how you receive electricity*

With the mere flip of a switch, electricity illuminates our lives. But have you ever thought about where your power comes from?

Most of us don't give it a second thought until our service is interrupted and we're left in the dark – even if only for a short amount of time. In today's world, electricity is a necessity, and this necessity travels a great distance to reach you – our members.

LREC provides electricity to 24,101 meters, and it takes a network of folks to do so. We build and maintain 2,956 miles overhead and 91 miles of underground power lines and manage the equipment needed to provide you with safe, reliable power – but did you know that we don't actually generate the power that is supplied to your home? That's where our local generation and transmission cooperative (G&T) comes in.

LREC receives electricity from Associated Electric Cooperative, Inc. (AECI). G&Ts are wholesale power suppliers that are owned and governed by electric distribution cooperatives, just like LREC. AECI produces and purchases electricity then sends the power over high-voltage transmission lines to KAMO (transmission cooperative) who then moves the power to LREC substation. Since G&Ts are owned by multiple distribution cooperatives, operating costs are split among the owners. This process allows us to purchase power at a lower cost.

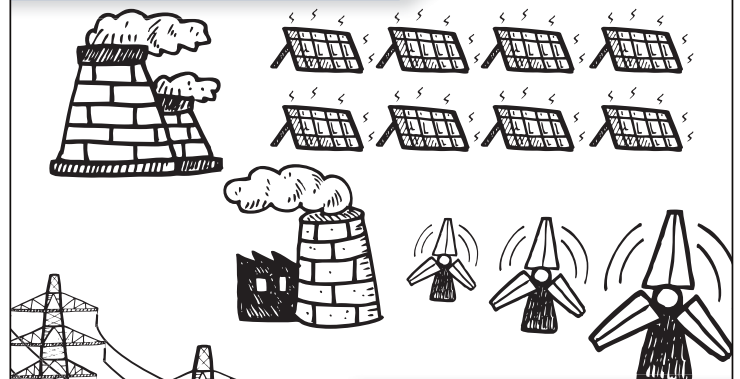
After the power is sent over transmission lines, it then makes its way to our substations, where the voltage is reduced in order to make it to your home safely. LREC owns 18 substations, each located within our seven county service territory. From the substations, power is sent to LREC's transformers, those large boxes that sit at the top of power poles, then directed to your home.

As you can see, 191201 there's a little more to it than flipping a switch, but we've got you covered. LREC has provided our members with safe, reliable and affordable power for 65 years, and that continues to be our number one goal today.

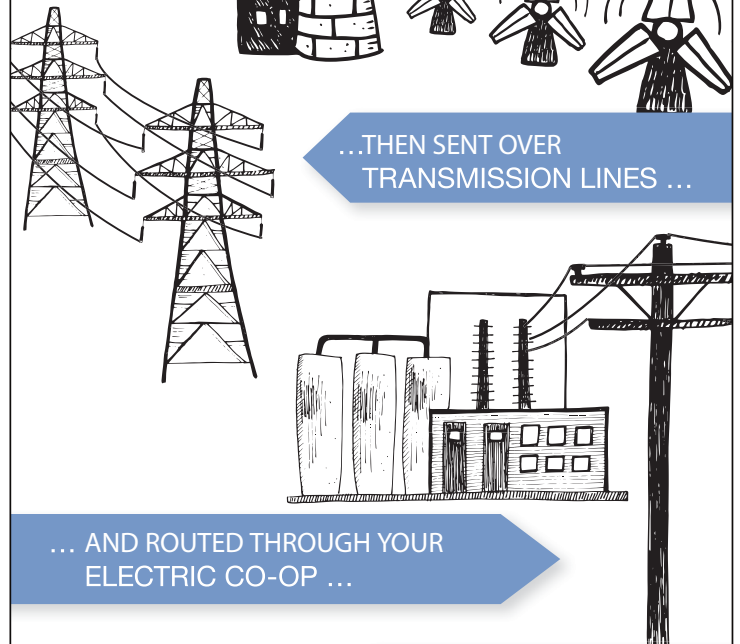
**LAKE REGION**  
ELECTRIC COOPERATIVE

## Where does my power come from?

### POWER IS GENERATED ...



### ...THEN SENT OVER TRANSMISSION LINES ...



### ... AND ROUTED THROUGH YOUR ELECTRIC CO-OP ...



### ... WHERE IT IS SENT VIA DISTRIBUTION LINES TO YOUR HOME.

# Gross Receipts Tax Provides Much Needed Money for Rural Schools

*When it comes to supporting local schools, electric cooperatives earn an A+. Every year, Oklahoma co-ops pay millions in tax revenues to rural schools via the electric cooperative gross receipts tax.*

Electric co-ops pay **gross receipts tax** to the Oklahoma Tax Commission. The Tax Commission then distributes **95 percent** of these funds to schools based on the number of miles of cooperative lines in each school district.

It is worth noting that investor-owned utilities pay advalorem taxes, but only 50 to 60 percent of these funds go to schools.

In 2013, Lake Region Electric Cooperative (LREC) paid \$717,086.32 in gross receipts tax. These funds benefit 34 schools in LREC's service territory.

The chart (on the right) shows the allocation of school funds in LREC's area. Tax distribution varies from school to school because some school districts have more miles of cooperative lines.

Because rural schools benefit directly from these taxes, LREC and other Oklahoma electric cooperatives firmly support this program. Over the years, various proposals to change the tax structure would have diverted funds away from rural schools. These plans were met with opposition from rural school leaders and electric cooperative officials.



## Tax Allocation to Local Schools

School District	Miles of Line	Taxes paid in 2013
Kansas	48.59	\$11,468.88
Fort Gibson	114.27	\$26,969.53
Oaks Mission	83.36	\$19,674.89
Hulbert	257.64	\$60,806.97
Haskell	19.86	\$4,686.48
Tahlequah	344.02	\$81,193.30
Keys	216.27	\$51,042.50
Lowery	126.73	\$29,910.61
Norwood	94.38	\$22,274.58
Woodall	61.79	\$14,582.20
Shady Grove	68.40	\$16,143.06
Peggs	149.46	\$35,273.94
Grandview	133.05	\$31,402.56
Briggs	74.45	\$17,570.25
Tenkiller	0.59	\$138.89
Okay	66.93	\$15,795.37
Catoosa	19.20	\$4,530.52
Broken Arrow	19.30	\$4,554.29
Porter	182.15	\$42,989.70
Coweta	234.72	\$55,397.90
Wagoner	376.35	\$88,824.57
Chouteau/Mazie	16.60	\$3,918.94
Wickliffe	1.61	\$381.07
Locust Grove	155.00	\$36,580.28
Skelly	8.45	\$1,994.26
Westville	6.07	\$1,432.00
Webber Falls	12.14	\$2,865.08
Muskogee	2.94	\$692.96
Braggs	73.14	\$17,262.89
Inola/Gregory	68.40	\$16,145.28
Leach	1.26	\$298.37
Spavinaw	0.16	\$38.31
Moseley	0.14	\$32.43
Gore	0.90	\$213.46

### Board of Trustees

Gary Cooper .....Pres.  
Bobby Mayfield .....Vice Pres.  
Jim Loftin .....Secr.-Treas.  
Jack Teague .....Asst Secr.-Treas.  
Randall Shankle ..... Member  
Lynn Lamons ..... Member  
Scott Manes ..... Member

### Staff

Hamid Vahdatipour .....CEO  
Ben McCollum .....Dir. of Finance  
Martin Walls .....Dir. of Operations  
Stanley Young .....Dir. of Marketing  
Larry Mattes .....Editor  
Tina Glory-Jordan .....Attorney

### Office Hours

Monday-Friday  
8:00 a.m. - 4:30 p.m.

### Telephone

800-364-LREC or  
918-772-2526

### Website:

[www.lrecok.coop](http://www.lrecok.coop)

### Locations

Hulbert, Wagoner &  
Tahlequah, OK.

### Main Office Address

P.O. Box 127  
Hulbert, OK 74441

### Hidden Account Number

Look for your account number hidden in this issue of the *Powerline Press*. If you find your number, Lake Region Electric will credit your next bill.

To claim your credit, notify LREC's Hulbert office by phone or mail during the month of publication.

The amount increases by \$10 with each issue your prize goes unclaimed to a maximum of \$50.

For more information, call **800-364-LREC** or **918-772-2526**

**Cooperative bylaws** are available upon request at Lake Region Electric Cooperative's office in Hulbert.