

Powerline Press

NEWSLETTER



Photo Credit: Angela Jones

A Supplement of Oklahoma Living Published by Lake Region Electric Cooperative for its members.

MAY 2021

Students Attend Leadership Summit



JuaNita Keener, LREC Youth Programs Coordinator, Brooklyn Spencer, Porter senior and Caroline Blackford, Home School senior.

Roughly 25 students representing Oklahoma's Electric Cooperatives attended the 2021 Oklahoma's Electric Cooperatives Leadership Summit in March at the Oklahoma State Fair Grounds. This annual event is designed to excite and motivate high school students to become leaders of their communities. Over 500 Oklahoma high school students have been recognized for their leadership abilities by having the opportunity to attend one of the previous leadership summits.

Representing LREC for the 2021 Leadership Summit was Porter senior, Brooklyn Spencer, and Home School senior Caroline Blackford.

"The summit was exciting, and I enjoyed the team-building activity. My experience was great," Blackford stated.



A recent fire damaged LREC's poles and fiber equipment. The damaged fiber lines caused roughly ten homes to lose internet service.

We take your service seriously. We offer quick repair response time and network support.

Clay Wilson, Fiber Tech

April Annual Meeting

With the deadline to print our newsletter - the annual meeting election results and prize winners will be published in the June issue. Be sure to watch for your June newsletter.

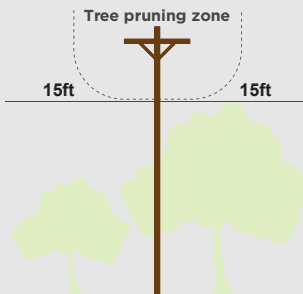
If you did not attend the annual meeting, we missed seeing you, and be sure to mark your calendar to participate next year. We will post our 2020 Annual Report and photos on our website, and Facebook account for members to view from this year's meeting. Thank you again to everyone who attended this year.

TREE TRIMMING

We love trees. But when they grow too close to or into LREC's power lines they can cause power outages and pose safety risks. LREC's first priority is to remove trees within our power line right-of-way to maintain a safe and reliable system.

Our Process

We follow a cycle, meaning that trees shouldn't need to be trimmed again for five years or more once we trim a problem tree or area. Crews will inform the homeowner of what trees will have to be removed and which ones can be trimmed inside our right-of-way.



Clearance

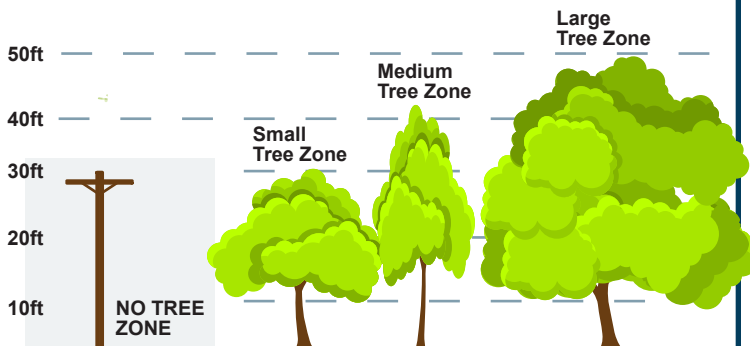
Maintaining a proper clearance of 15ft on each side of our poles helps prevent wind, snow, ice from breaking tree limbs and sending them into the lines.

30ft 20ft 10ft 0 10ft 20ft 30ft

Tree Planting

You can help us keep our power lines clear of trees by following better practices when you plant trees.

- > Don't plant trees within 25 feet of LREC power lines
- > Only shrubs or small trees (less than 20 feet tall) should be planted near poles.
- > Don't plant any vegetation around LREC underground equipment, such as transformers, junction boxes or fiber pedestal.



Report trees growing into LREC's power lines or equipment immediately. Never trim these trees yourself.

REBATE REMINDER

You save. We pay.

LREC offers a variety of rebate programs designed to help both homeowners and business owners save money on their electric bills.

LREC's residential rebate programs are designed to help members save money on their home electric bill, while also removing inefficient appliances and equipment from our lines. The majority of the funding for our rebates is made available through our wholesale power provider, 72800 Associated Electric Cooperative.

Members can get money back for installing programmable thermostats, electric water heaters, heat pump water heaters, mini-split air conditioners, energy star window unit and heat pump heating and cooling systems.

Window Unit Air Conditioner Rebate

\$50



Businesses can save too.

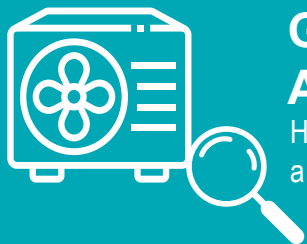
LREC offers a commercial business lighting rebate available for schools, commercial, industrial, and agricultural business members.

Contact Juanita Keener **918-772-6940**, for questions or to discuss rebates.

For more info and rebate forms visit www.lrecok.coop/rebates

SPRING INTO SAVINGS!

Spring
energy-saving
checklist.

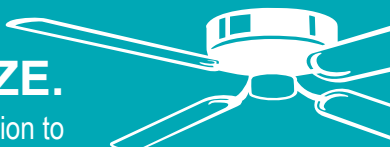


GIVE YOUR A/C A CHECKUP.

Have your HVAC system inspected by a pro annually for peak performance.

FEEL THE BREEZE.

Switch your fan's direction to counter-clockwise to push cool air down.

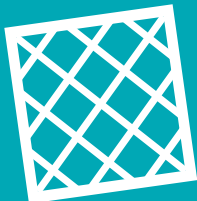


SEAL PESKY LEAKS.

Don't lose cool air this summer. Seal your air leaks around doors and windows.

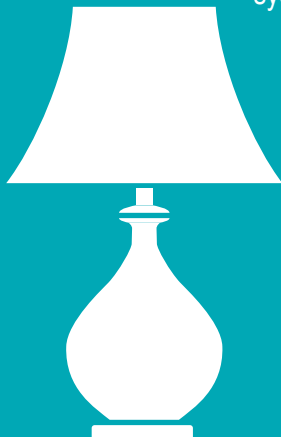
REPLACE AIR FILTERS.

Switch them out once a month to keep them working in tip-top shape.



DON'T TRICK YOUR THERMOSTAT.

Move electronics that radiate heat away from your thermostat to avoid your A/C system running longer than necessary.



www.lrecok.coop

HOW'S YOUR PASSWORD STRENGTH?

Strong passwords are worth the hassle.



Passwords can be a pain, but they serve as the lock and key to all your digital information. Having weak passwords makes you an easy target for hackers. Here are some tips for creating stronger passwords:

- ▶ Don't use the same password for everything.
- ▶ Use a combination of at least 8 characters, including upper and lower-case letters, numbers, and symbols.
- ▶ Don't pick passwords that are easy to guess like anniversaries, phone numbers, or consecutive letters on the keyboard.
- ▶ Always use two-factor authentication when possible. This is especially true for your email accounts because your email is connected to all of your other accounts, from social media to banking institutions.
- ▶ Change your password every 90 days.
- ▶ Select harder security questions. Most people use first names, pets, or relatives, but all this information is easily found on social media profiles.
- ▶ Always log off your account if you're leaving your device lying around.

Have an internet safety question you'd like us to address? Send us an email: fiber@lrecok.coop.

WHY DO I NEED A GIG?

There's a lot of talk about Gig internet speed, but do you really know what a Gig can do for you? Here are a few things you may not know about Gig speeds:

Only 1 Gig speed internet is fast enough to do it all at the same time without buffering: stream HD TV and movies on multiple TVs and devices, online gaming, upload high-resolution photos, finish up online homework, watch videos on Facebook, listen to music, and so much more.

The Fiber-to-the-Home Council's nationwide study of real estate prices found that access to fiber internet and Gig internet speeds increases a house's value up to 3.1%. That's \$6,200 on the average home!

Never have to worry about the future of the internet; you can easily add new tech like 8K TVs, HD home security cameras, and more smart home devices at any time—your Gig connection makes it seamless, and the service can handle them.

Only a true Gig connection - 1,000 Mbps - lets you do it ALL. And it just so happens that a fiber network, like Lake Region's, is the only technology that can provide true Gig speed!

Get Gig internet speed today at lakeregionfiber.com or 918-772-2526

* Live service not available in all areas. Must pre-register for service. 24/mo contract is required for residential free installation. Other terms may apply.

Your Board of Trustees

Scott Manes.....President
Lynn Lamons.....Vice-President
Randall Shankle.....Secretary-Treasurer
Jack Teague.....Asst. Secretary-Treasurer
James Walls Trustee
Gary Cooper Trustee
Dianna Mayfield.....Trustee

Staff

Hamid VahdatipourCEO
Ben McCollumDirector of Finance
Logan Pleasant.....Director of Operations
Glen ClarkDirector of Marketing
Larry Mattes.....Communications
Tina Glory-JordanAttorney

Office Hours

Monday-Friday
8:00 a.m. - 4:30 p.m.

Telephone

800-364-LREC or
918-772-2526

Website:

www.lrecok.coop
www.lrecok.net

Locations

Hulbert, Wagoner &
Tahlequah, OK.

Main Office Address

P.O. Box 127
Hulbert, OK 74441

Hidden Account Number

Look for your account number hidden in this issue of the *Powerline Press*. If you find your number, Lake Region Electric will credit your next bill. To claim your credit, notify LREC's Hulbert office by phone during the month of publication.

The amount increases by \$10 with each issue your prize goes unclaimed to a maximum of \$50.

Cooperative bylaws are available upon request at Lake Region Electric Cooperative's office in Hulbert.

